

# Testing Solution **for** SAP

## WHAT is Worksoft?

**A strong testing platform for SAP Business Suite. Worksoft Certify<sup>®</sup>, validates end-to-end business processes across all of your enterprise applications with the industry's top-ranked solution for functional testing and business process quality.**

The solution is usually foreseen for a minimum of 70% of automated testing for any application, reaching incredible ROI's for IT and SAP application testing. We can reduce dozens of days per year of your end-user testing for SAP and other applications, including web based.

## Why Worksoft Solution?

### SIMPLE

Designed for business users.  
No programming skills required.

### FAST

Automate 60-70% of core business process validation in 90 days or less.  
Rapid ROI.

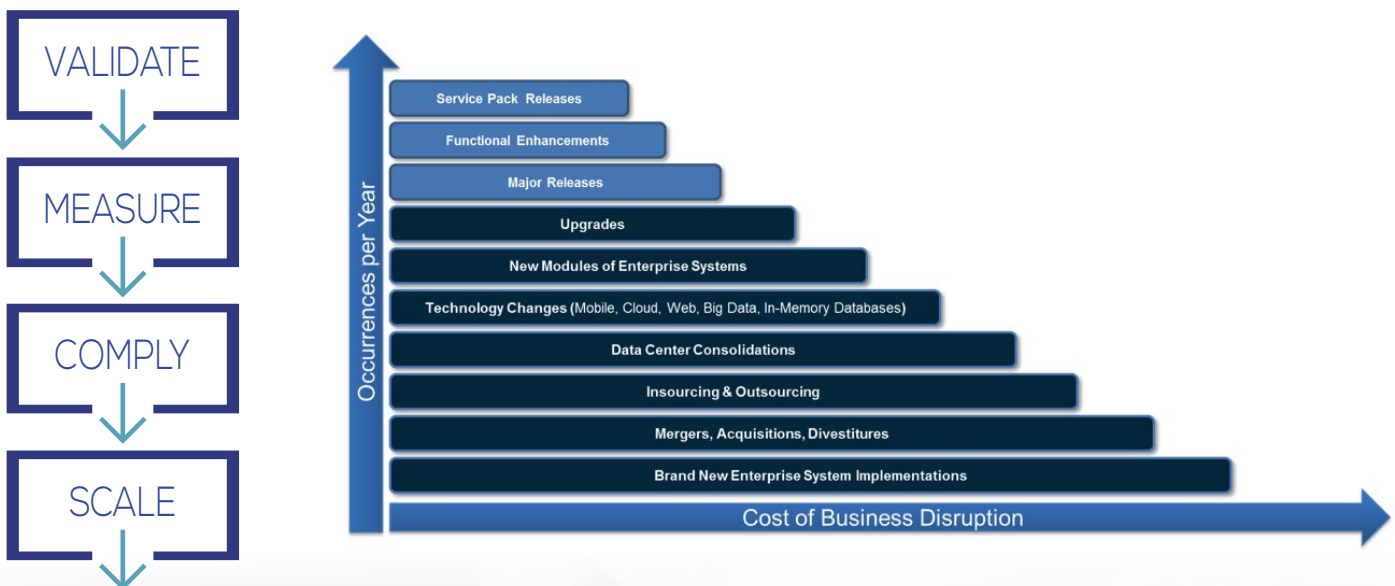
### RESILIENT

When applications change, Worksoft automation continues to perform.  
Simple maintenance of your business process portfolio.

### COMPLETE

True end-to-end business process validation & discovery covering all major technologies and platforms.

## Automated Business **Process Validation**



# IDC Business Benefits

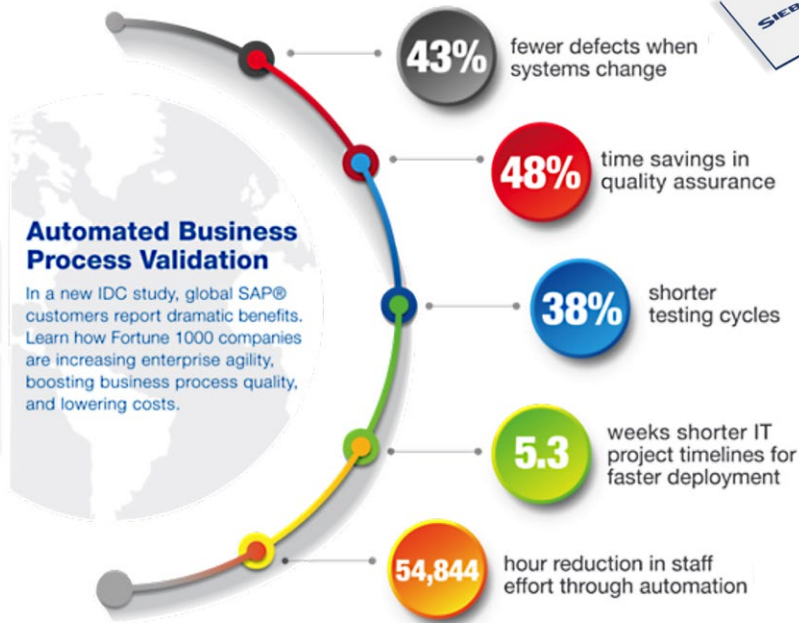
IDC, an independent Analytics and Statistics company, is classifying Testing software as the most valuable Return on Investment solutions.



**IDC**  
Analyze the Future

**\$11.46** million NPV of Worksoft Certify® over 5 years

**537%** return on investment



## Main functionalities

- > SAP Security testing is included (testing the SAP Roles)
- > Easy usage, simplified use of Worksoft Certified:
  - > Capture the full process with special cases (pop-ups, checks...)
  - > The business processes are validated also through Worksoft
  - > The Worksoft Certified is a non-programming application and usage. No special skills are required and no script inside
  - > Test building is always fast for most of the application testing
  - > Worksoft simplifies the maintenance effort
  - > The Capture method is very simple through the GUI usage
  - > The documentation including the screen shots will be delivered automatically when we run the tested process with Worksoft Certified
  - > A "LEGO" based technology: one transaction capture and maintenance is done once and can be used in any project (brand), any process or at global level for all brands
  - > Combining "LEGOs": insert another transaction at any time
  - > Language based application independent (use the System Message ID's)
  - > Simulation of end-users and capture the time to run: a full log is captured to check the performance of the process / transaction
  - > Master Data automation is possible (Dataset)

## Ask for our special SME PACKAGES

You are a **small SAP ECC** or **All-In-One customer** with less than 300 SAP users:

### CONTACT US

for our special SME\* version of Worksoft.

**3 PACKAGES** are available for 100, 200 300 SAP users, including 3 users for Worksoft Certify module (testing and automation).

\* Small and Medium Enterprise.